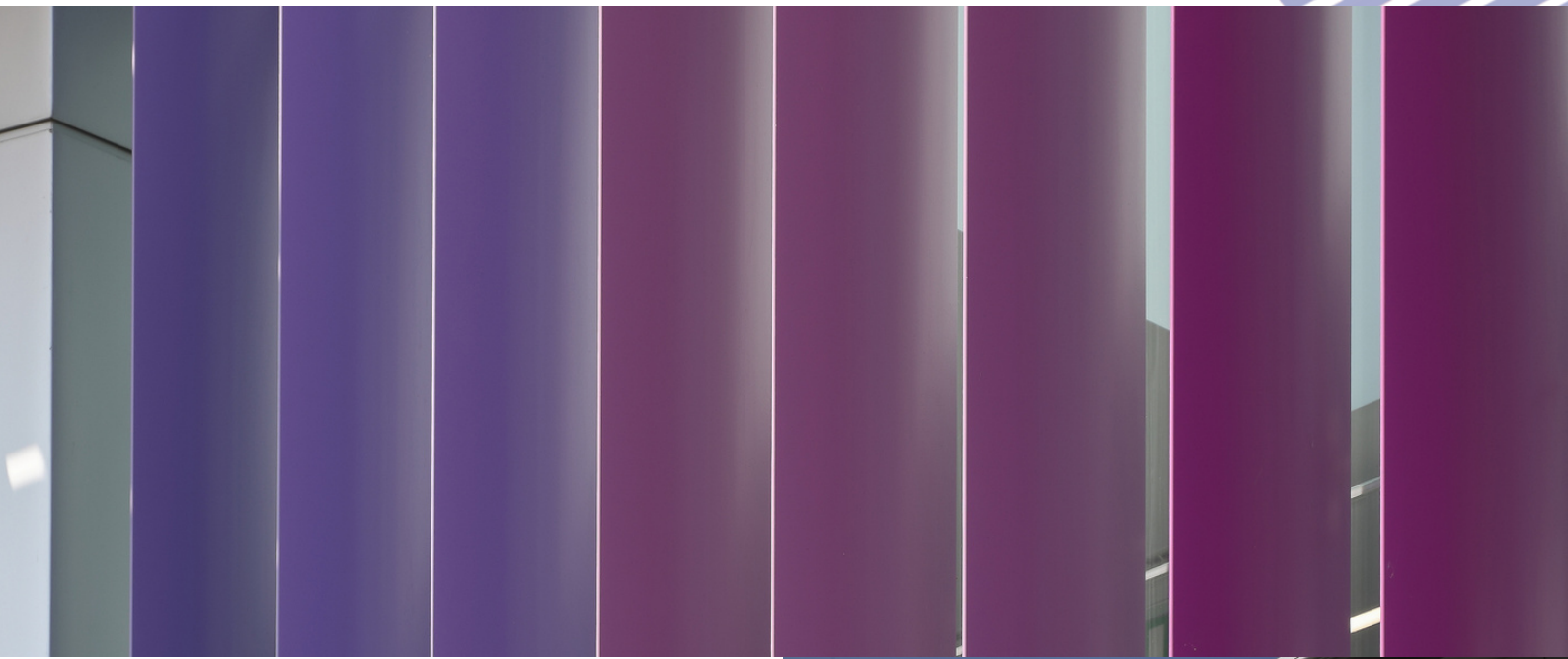


# Granta Park, Watson Building

Architect: RH Partnership Architects

Product: 400AF and Canopy



## CASE STUDY

There is a greater focus now being placed on new approaches to creating more value for our clients to develop and construct our projects faster, more efficiently and lowering the overall cost. At Contrasol we consistently look to develop innovative techniques to make our projects and programs a success and for this refurbishment project for the Watson Building at Granta Park we used pre-assembly and off site production methods for the self-supported clad entrance area.

Our steel support structure was assembled and clad in our factory before delivery to site, it provides a striking new enclosed canopy for the building entrance with a colour scheme to match the new 400mm wide vertical feature fins we installed above. The Watson Building located at the heart of the Cambridge Science Cluster is predominantly an office building which has been recently refurbished to allow for multi-occupancy. Other occupiers include Illumina and Cancer Research UK. A well established and important business hub, Granta Park is a community of over 3,700 people committed to researching future technologies and is home to leading companies, including AstraZeneca, Illumina, Pfizer, PPD and Sosei Heptares.

