

# Harwell Innovation Centre

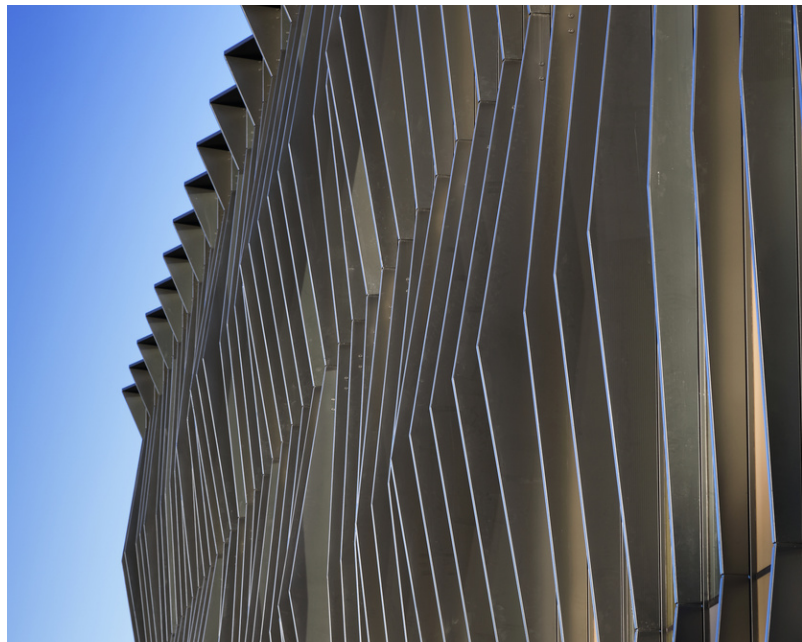
Architect: Hawkins Brown Architects

Product: Bespoke Feature Fins



## CASE STUDY

The Quad One Building is a striking Grade A landmark development offering office and laboratory space, plus a range of staff amenities. Quad One is a prominent location at the heart of the UK's leading science and innovation campus. The suites at Quad One allow for clients bespoke fit-out, with office and laboratory space from 300 to 12,500 square feet available. Alongside Quad One is a new 6,000 square foot gym/café and high quality public realm open space to complement the range of existing campus amenities. ContrasoL worked closely with both the Architects and Facade Contractors to design and install a bespoke vertical fin system, incorporating a combination of 100mm, 200mm and 300mm extruded aluminium rectangular section blades ensuring a smooth transition from concept to completion, with an elegantly engineered product solution. Each Vertical blade is attached to pre-drilled brackets via bespoke architectural fixings and an internal Spiggot system.



CONTRASOL

