

Beatson Translational Research Centre

Architect: RMJM
Product: Fritted Glass Brise Soleil



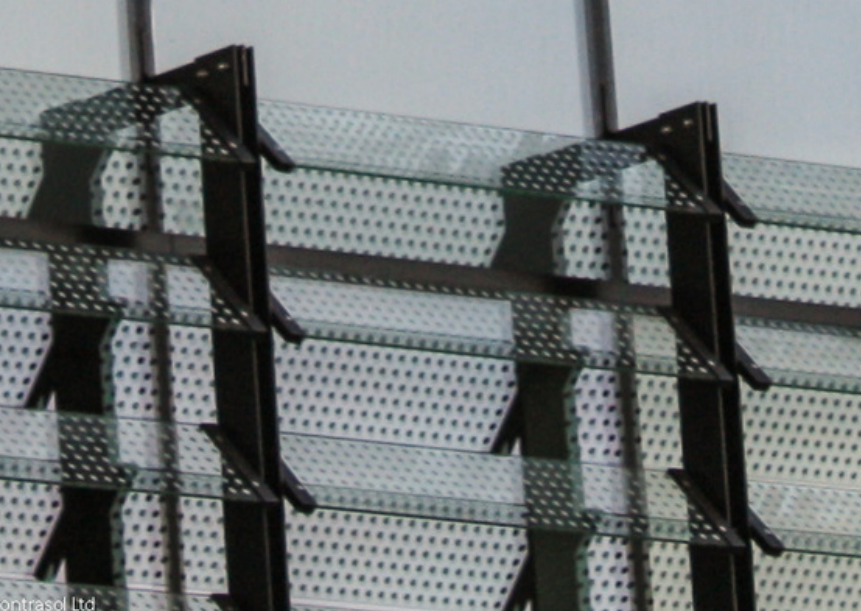
CASE STUDY

This new facility at the University of Glasgow has been created to provide a national centre of excellence for cancer research and will form the final stage of Glasgow's cancer care strategy alongside Beatson Oncology Centre and Beatson Institute for Cancer Research.

The medical faculty required exceptional aesthetics and functionality from the design. A highly technical facade was created with bespoke anodised artwork on the cladding panels. On the south facing facade we were employed to design and install glass louvre fins with a bespoke digitally printed frit pattern. The glass fins were supported from the curtain wall mullions by our curtain wall knife brackets to give a clean and minimalist look.



CONTRASOL Ltd



contrasol Ltd

td