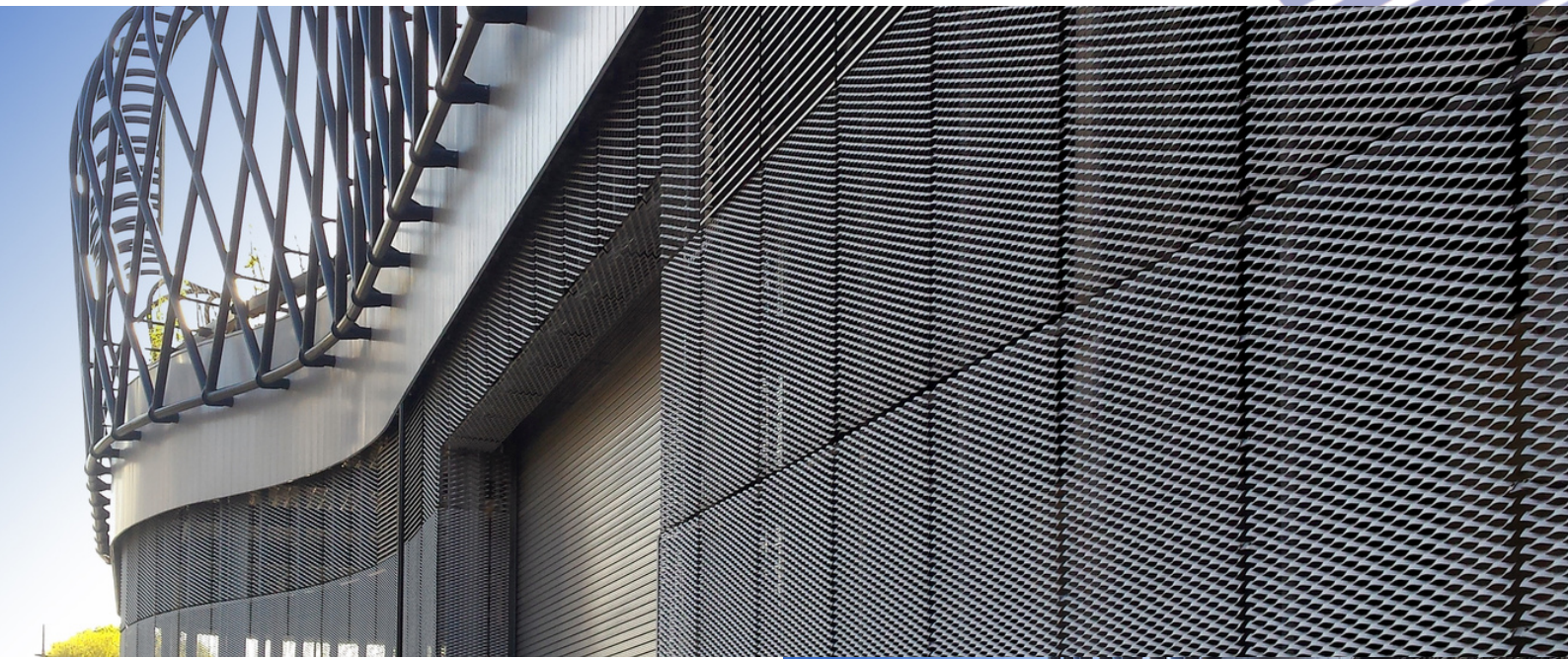


Hallsville Quarter, London

Architect: : Haworth Tompkins
 Product: Anodised Aluminium Expanded Mesh



CASE STUDY

This is the first phase of a major regeneration project in Canning Town. The development will incorporate around 1,000 homes, including high quality accommodation for senior living, retail spaces, community centre, primary health care and nurseries.

There is also a hotel with up to 200 rooms, a conference facilities, pedestrian, cycle and vehicle routes, leisure space and a 7,900m² Morrisons supermarket. For this phase we provided screening and ventilation louvres to all four accommodation blocks in anodised aluminium mesh forming screens for the Morrisons store. We also designed and installed Brise Soleil over the south facing terrace areas on the top floor flats.



CONTRASOL

