

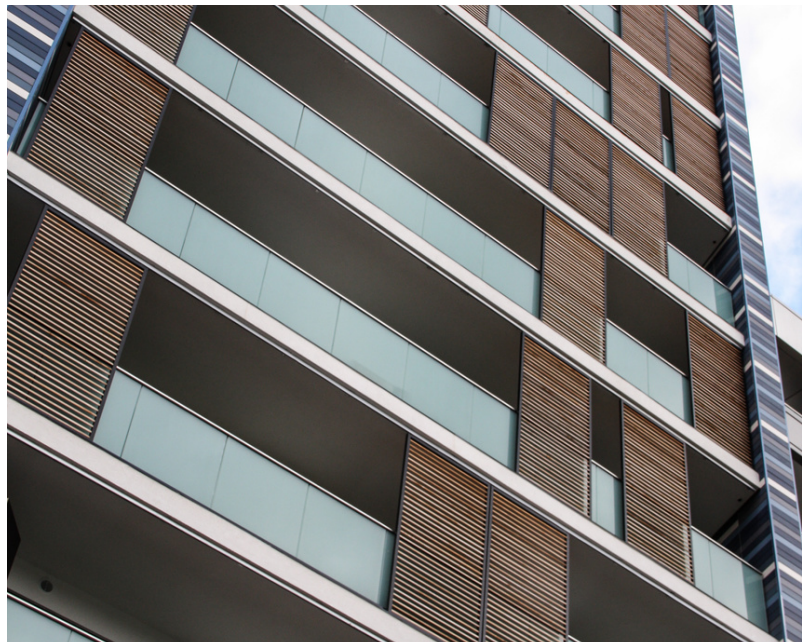
South Kilburn, Zone 11

Architect: PRP Architects
Product: Sliding Shutters



CASE STUDY

This large scale project built by Denne Construction and designed by PRP Architects, features over 200 Contrasol Sliding Shutter's. Featuring a Western Red Cedar timber infill these shutters give the residence an effective solution to controlling solar gain and privacy. This contemporary high rise offers residents a mixture one and two bedroom apartments and represents an up and coming regeneration of the local London borough where an estimated 3000 new home in the near future



CONTRASOL

